

## diurnal (adjective)

Definition: active during the day

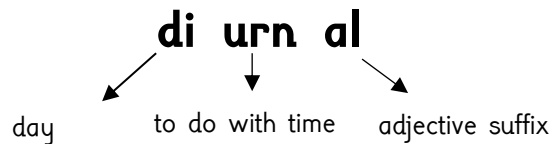
Say word with correct syllable stress

'diurnal'

Syllables/graphemes for decoding and encoding

d i | ur | n al

Morphemes for vocabulary and comprehension



Words to explore: diary



Horses are diurnal.

## nocturnal (adjective)

Definition: active at night

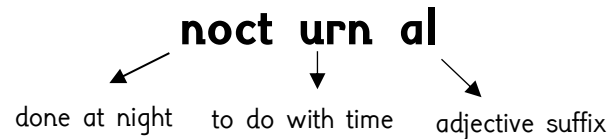
Say word with correct syllable stress

'nocturnal'

Syllables/graphemes for decoding and encoding

n o c | t ur | n al

Morphemes for vocabulary and comprehension



Words to explore: nocturne



Foxes are nocturnal.

## crepuscular (adjective)

Definition: active at twilight (dawn and dusk)

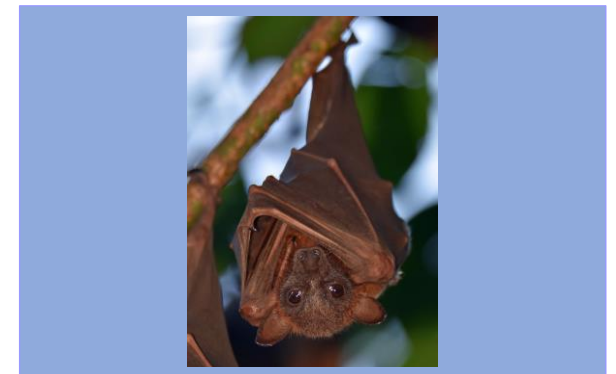
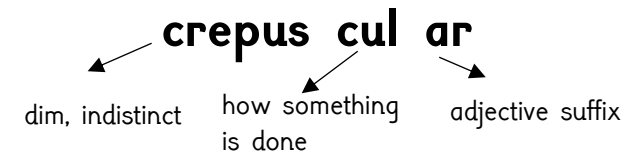
Say word with correct syllable stress

'crepuscular'

Syllables/graphemes for decoding and encoding

c r e p | u s | c u | l ar

Morphemes for vocabulary and comprehension



Bats are crepuscular.